



The Labyrinth of the King

Follow into the mystery and
come discover the greatest Love of all.

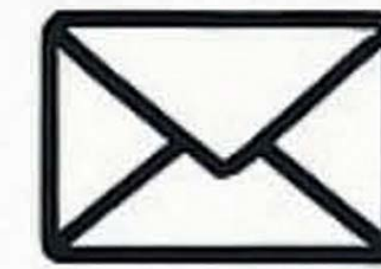
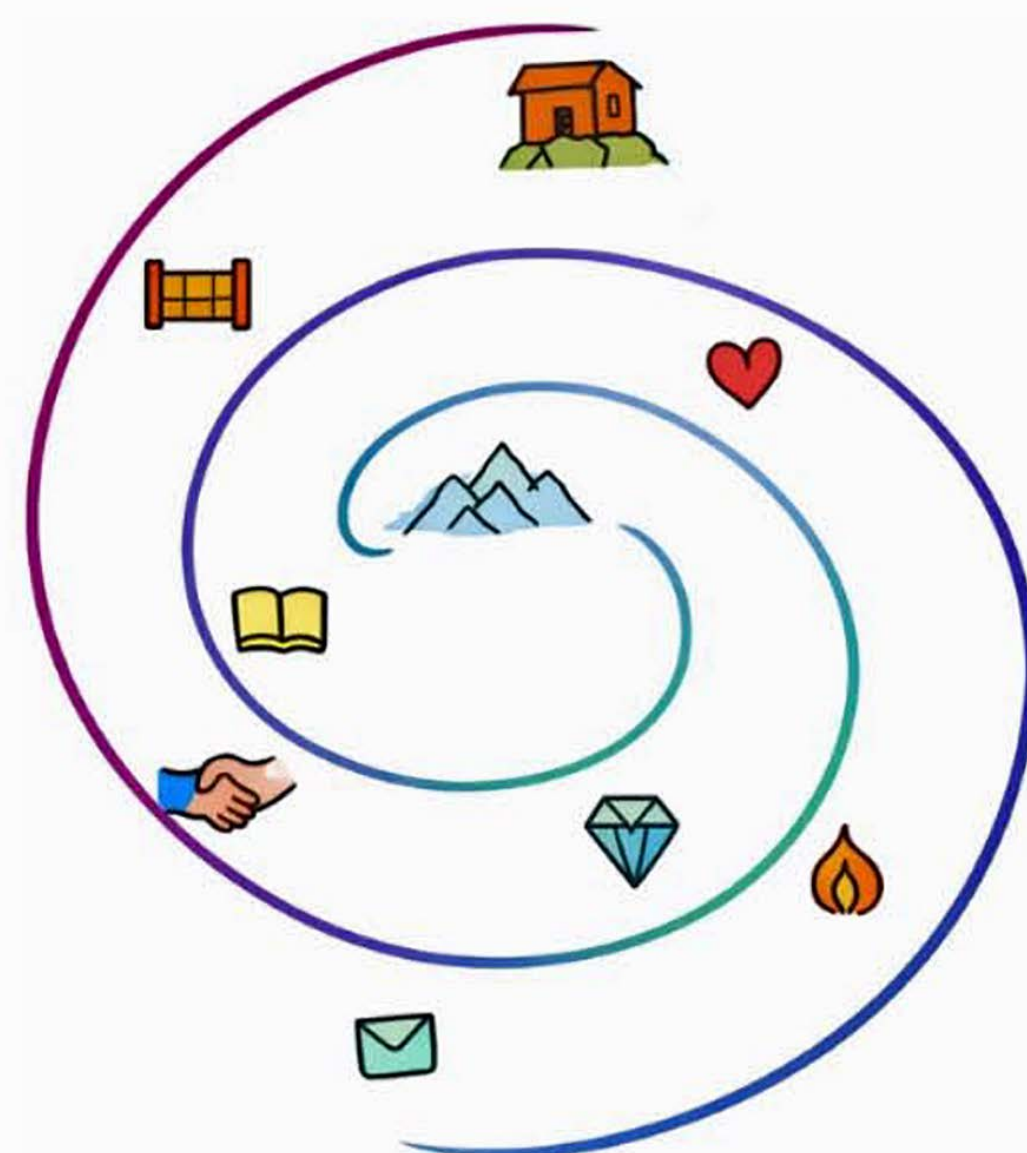
EMMANUEL CHURCH WESTON FAVELL

This Valentines Day SATURDAY 14TH FEBRUARY

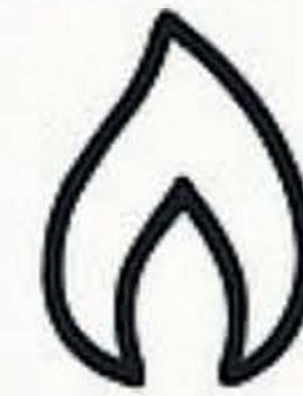
drop in anytime between 10AM - 2PM

ALL ARE WELCOME

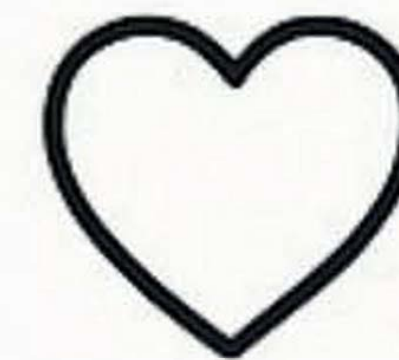
Using the teachings of Jesus from The Sermon on the Mount
Prepare to take a winding journey through activities, challenges, creativity,
story telling and quiet reflective moments. All unfolding within the heart of
Emmanuel Church.



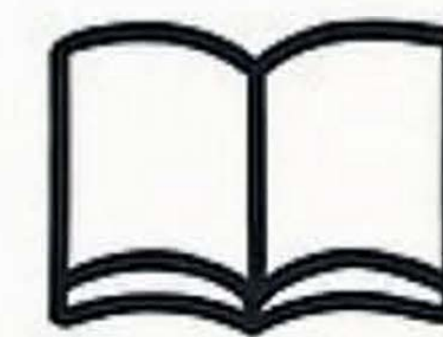
The Labyrinth of the king begins with remembering
that we are ALL invited and Blessed as we are.



As we step onto the path we discover a bright light inside,
placed inside us with Purpose and Love.



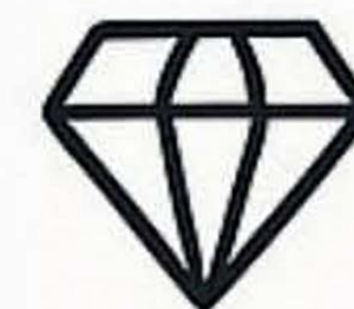
Next we begin to sense a deeper link between the
mind and the heart, we slowly find harmony between
how we act and how we move inside.



Then we find rest in the secret place, becoming still enough,
to listen and reflect. This is where our awareness grows.



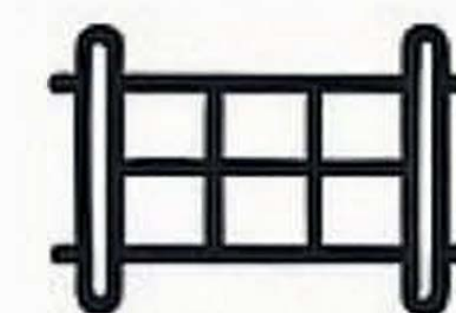
Here in the centre we humble ourselves
and open our hearts up to Truth.
We realise something greater is happening amongst us.



As we move on from the centre we hold close what weve found
and see our real treasures were always within.
Our Love, our Kindness and our Courage.



We then begin to share our real treasures inside to nurture our
relationships.
Choosing Love over hate, Mercy over judgement.



Next we choose Courage as we follow the path of Faith and Love.



From here we lay a foundation that can not be shaken,
one rooted in Love, Hope and Redemption.